

HDS-8m & HDS-10m

Quick Start Guide



Function keys

HDS works very much like previous Lowrance products but there are some changes that make it even easier to use. For more details on any of the features mentioned here consult the user's manual.



Arrow Keypad Activates cursor. Press up, down, left or right to move the cursor.

FlyWheel Sliding your finger around the Flywheel allows you to scroll through menus and adjust certain features.

ZOUT Zooms out the Radar, Sonar and Chart pages.

ZIN Zooms in the Radar, Sonar and Chart pages.

EXIT Press to return to a previous screen, clear data and close menus. Pressing *Exit* on the Chart page will quickly switch between displaying the boat symbol and the last cursor position.

ENTER Press to save data, change values and accept menu commands; also acts as a short cut key for important functions such as saving a waypoint at the cursor position on the Chart page.

MENU Accesses the features available on each page.

PAGES Press to select the page (screen) to display or to access utilities such as the waypoints list and celestial table. Press and hold to switch control between the panels and combo (split screen) pages.

WPT FIND Press to save a waypoint at your current GPS position. Press and hold to search for waypoints and other points of interest (POI's) or quickly access waypoints, routes and trails..

LIGHT POWER Press to turn the unit on, adjust the backlight or place the unit in low power (standby) mode. Press and hold to turn the unit off.



Creating a Man Overboard (MOB) position:

- Press the **ZOUT** and **ZIN** keys at the same time to create a MOB waypoint with a line to your boat position.



Softkeys

The softkeys at the bottom of the page screen act as a shortcut to some of the units features, including setting a waypoint, Go to Cursor command, accessing information about on screen POIs, activating overlay data and mapping options.



The Chart page softkeys

To access any softkey feature, press the button below the on screen softkey. When you have finished making any adjustment or entering a command press the softkey button again to close the menu.

Pages screen

To view a page:

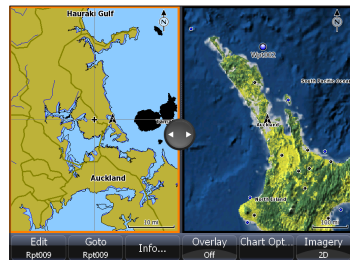
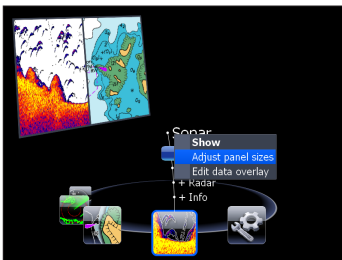
1. From any screen press **PAGES** to access the Pages screen.
2. Select the page display. Chart / Info will display a Chart and Info combo page.

To adjust Panel sizes on a Combo page:

1. From the Pages screen select the Combo page option you want to view, press the **MENU** key. Select *Adjust panel sizes*. Use the on screen button to adjust the panel size.

To add a Data or Gauge overlay to a page:

1. From the Pages screen select the page you want to add or Edit data display for, press the **MENU** key. Select *Edit data overlay*.
2. When the page appears press **ENTER** to add data or **MENU** to access options, or follow the on screen instructions.



MMC / SD card slot

The MMC card slot door has a magnetic latch. Always use care when inserting MMC cards. Forcing cards into the slot could cause damage. Make sure the MMC card slot door is always closed to help prevent moisture from getting into the card slot compartment. The right hand card slot features a higher speed connection and should be used first. The right hand card slot is MMC+ card compatible offering a higher speed connection for faster data transfer.



Waypoints

To Create Waypoint at current position:

1. Press the **WPT/Find** key to create a waypoint at the your current position.

To Create Waypoint at the Cursor position on Chart page:

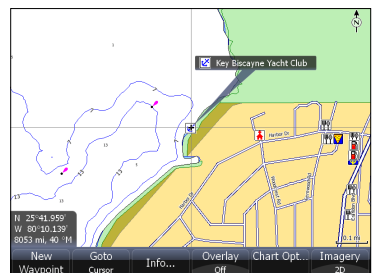
1. Place the cursor on the Chart page where you want to set the waypoint, press the **New Waypoint** softkey. The New Waypoint menu will appear.
2. Select *Save* from the New Waypoint menu.



Go To Cursor / Cancel Navigation

To Navigate to a Point of Interest on the Chart page:

1. From the Chart page center the cursor over a point of interest, press the **Go to Cursor** softkey. The unit will create a straight line navigation course to the cursor position on the Chart page.



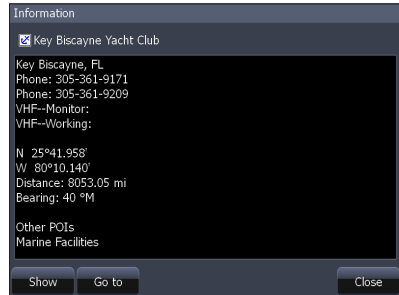
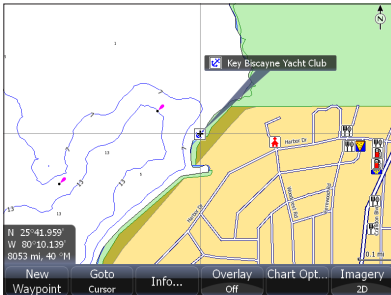
To stop Navigating to a Point of Interest or any other destination:

1. From the Chart page, press the **Cancel navigation** softkey.

Chart POI information

To view POI information on the Chart page:

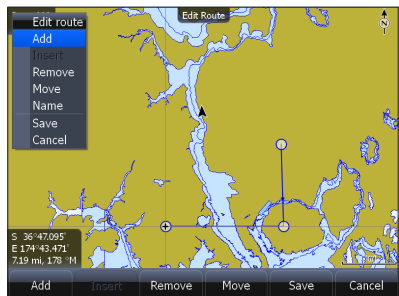
1. Select a POI on the Chart page with the cursor. A pop-up box will appear identifying the POI. Press the **Info** softkey. The Chart Info screen will appear.
2. To view additional information about the POI, select **Details**. The Information screen will appear.



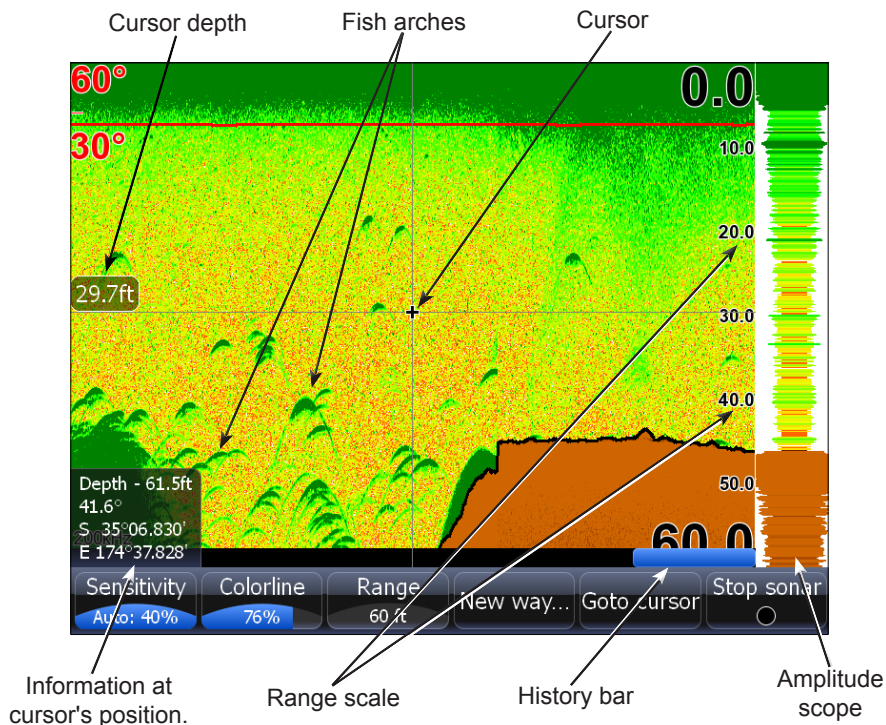
Routes

To create a Route from the Chart page:

1. Press the **MENU** key and select **New Route** from the Chart menu. Press **ENTER**.
2. Follow the on screen instructions.
3. Press the **MENU** key to open the Edit route menu. Select **Save** and press **ENTER**. The route will be saved to the Routes screen.
4. From the Routes screen highlight the route and select **Start**. The Start Route message box will appear, select either **Forward** or **Reverse**.



Sonar : (Available only when connected to a Sonar or Sonar/GPS unit via Ethernet cord.)



NOTE: The unit is set up for optimal automatic operation under most conditions. For use in thick weeds or very deep water; and a number of other fishing situations, a range of special Fishing Mode settings are available. Consult the user's manual for more details.



To adjust Sensitivity:

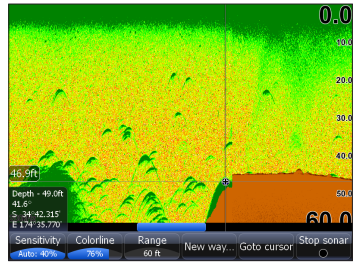
1. From the Sonar page press the **Sensitivity** softkey. The Sensitivity adjustment softkey will appear on screen. Use the left and right arrows on the Arrow keypad to make adjustments.

To adjust Colorline:

1. From the Sonar page press the **Colorline** softkey. The Colorline adjustment softkey will appear on screen. Use the left and right arrows on the Arrow keypad to make adjustments.

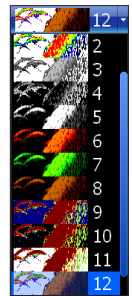
To mark an Underwater object with a Waypoint:

1. From the Sonar page, press the Arrow keypad to activate the cursor. Use the Arrow keypad to center the cursor over the underwater object, press **ENTER**. A waypoint will be created at the cursor's position on the Sonar page. The waypoint can be viewed from either the Waypoints screen or the Chart page.



To select a Sonar page Palette:

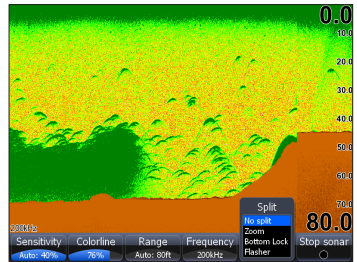
1. From the Sonar page press the **MENU** key. The Sonar menu will appear. Select *View* in the Sonar menu to open the View submenu.
2. From the View submenu select *Palette*. The Palette menu has 12 sonar screen categories, including Grayscale, Nightview and Iceview.



Sonar page Split screen options

To select a Zoom, Bottom Lock or Flasher split screen display:

1. From the Sonar page press the **Split/No Split** softkey. The Split screen options menu will appear. The Split screen options are: *No split*, *Zoom*, *Bottom Lock* and *Flasher*.



To view and control two Frequencies at once:

1. Press **PAGES** to access the Pages screen. From the Pages screen Sonar options select + *Sonar* combo pages.

